

ADDENDUM B

PHOTOGRAPHS OF

ACTIVE AGRICULTURAL AREAS

PHOTOGRAPHS OF ACTIVE AGRICULTURAL AREAS

Taken By: Woodward S. Hanson, MAI, CRE, CCIM
2233 Second Street
Fort Myers, FL 33901-3051

Taken On: April 1, 2004

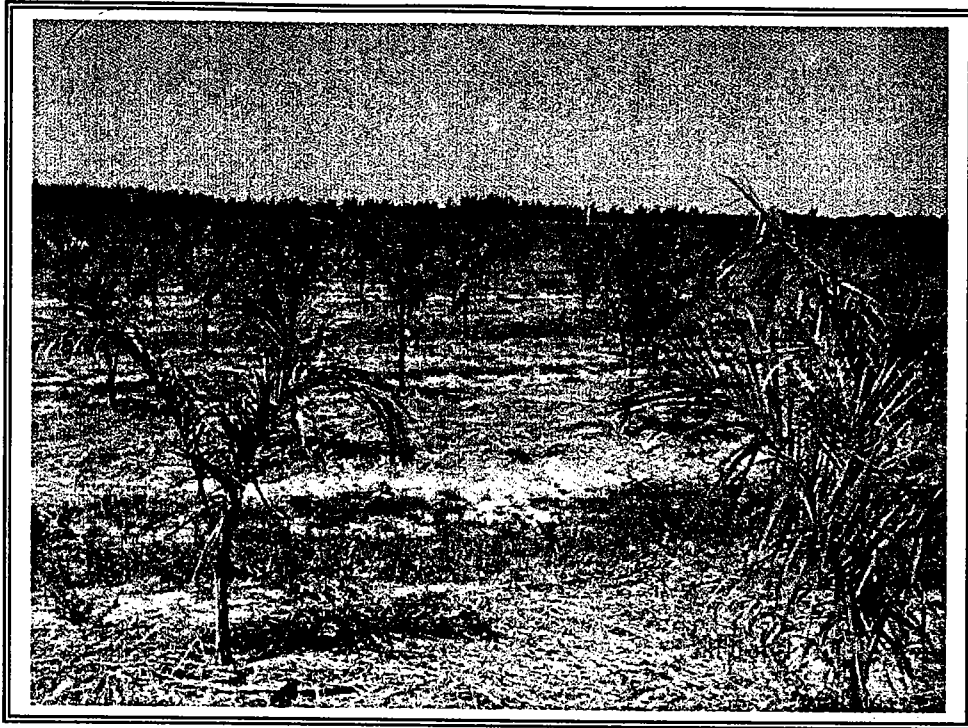


Photo No. 1: Photographic view of recently planted palm trees.

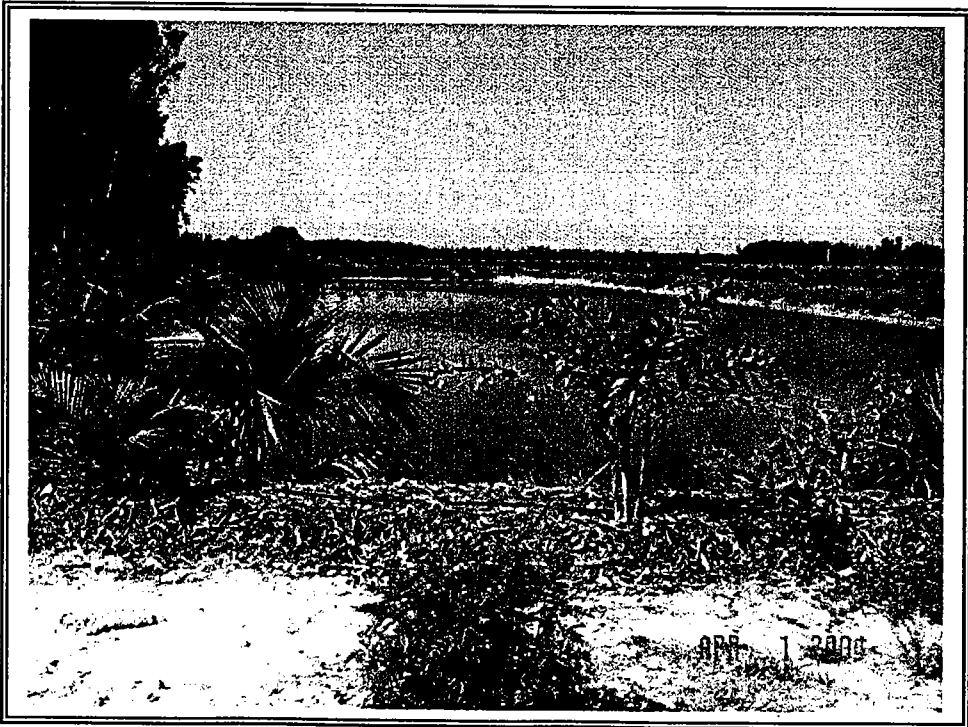


Photo No. 2: Photograph of water detention area.

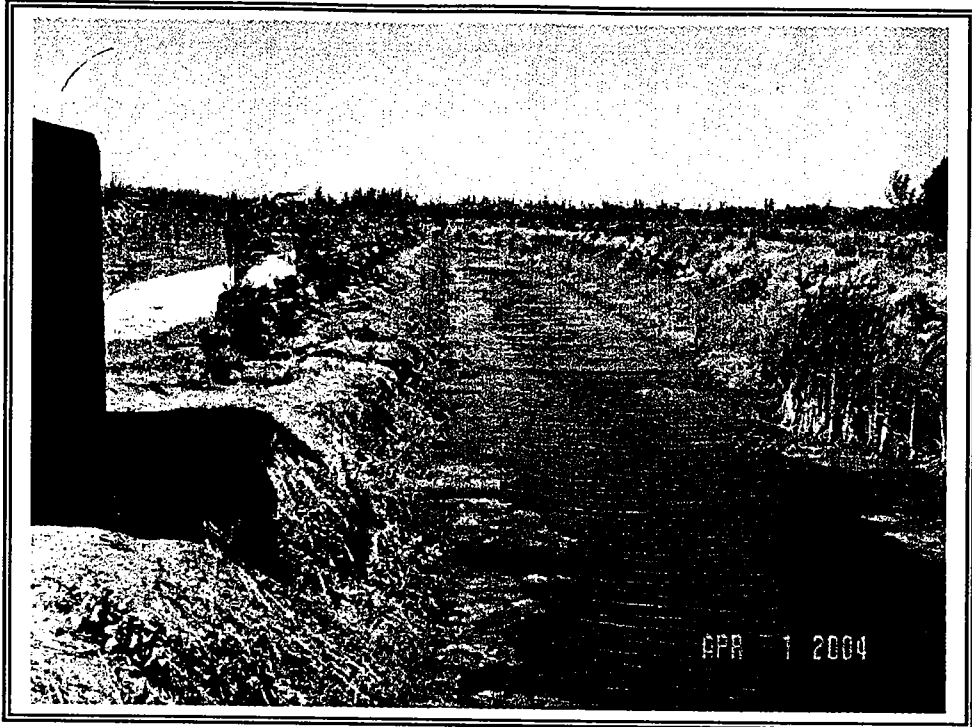


Photo No. 3: Photograph of canals within surface water management system.

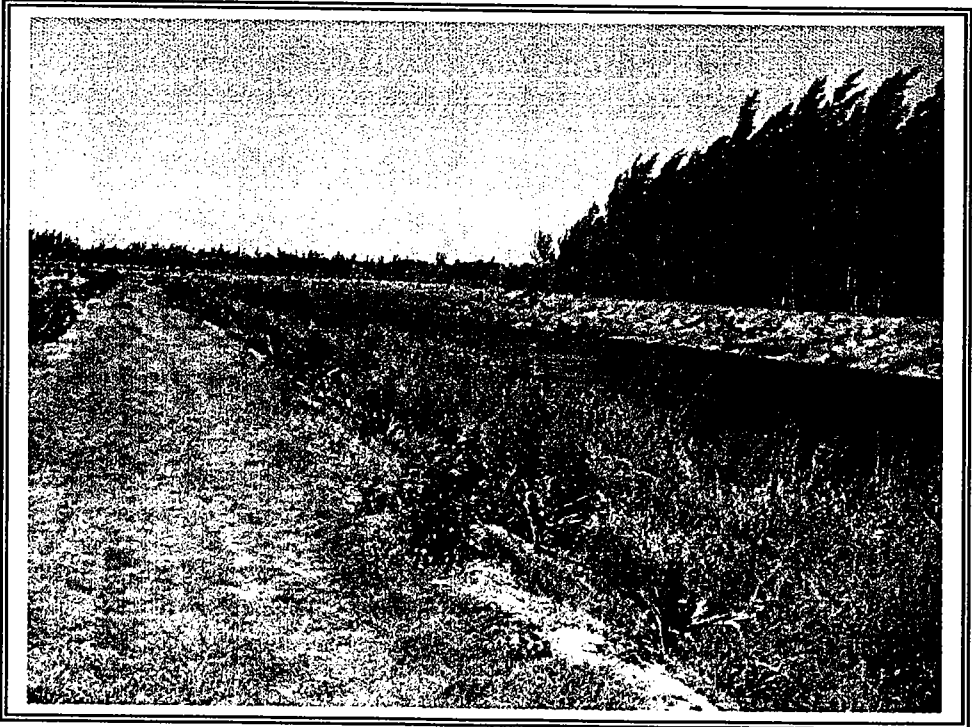


Photo No. 4: Photograph of canals within surface water management system.



Photo No. 5: Recently planted palms trees. Note the bedded areas and the drainage swales.



Photo No. 6: Photograph of throw-off pump.



Photo No. 7: Photograph of perimeter ditch at active palm grove facility.



Photo No. 8: Photograph of recently planted palm grove.



Photo No. 9: Photograph of palm grove field.

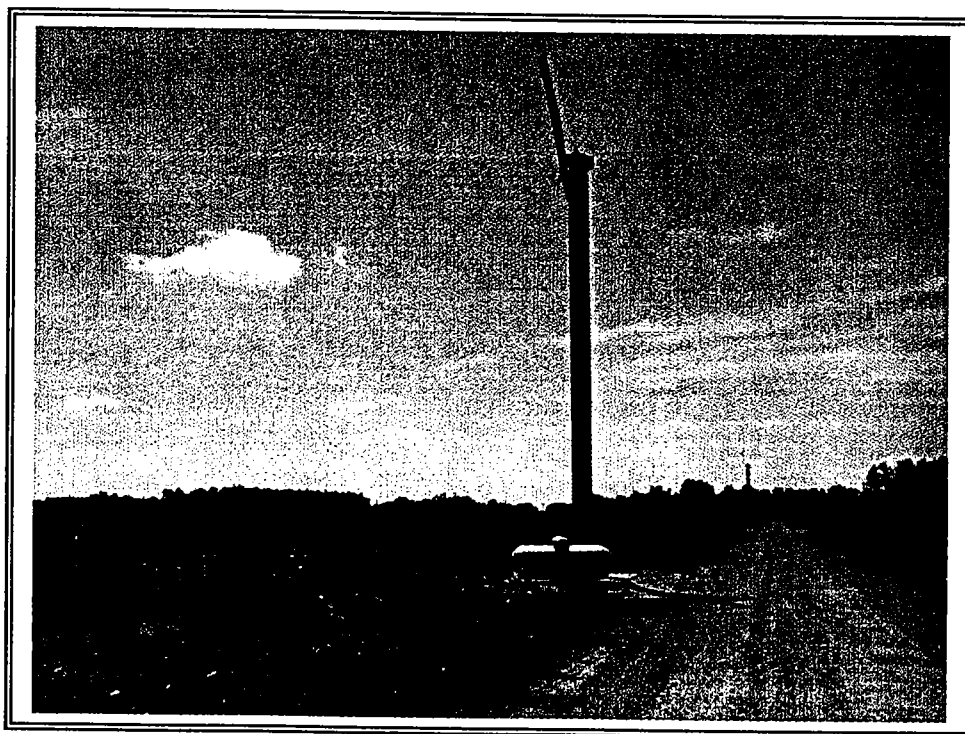


Photo No. 10: Photograph of internal road and cold weather protection fan.

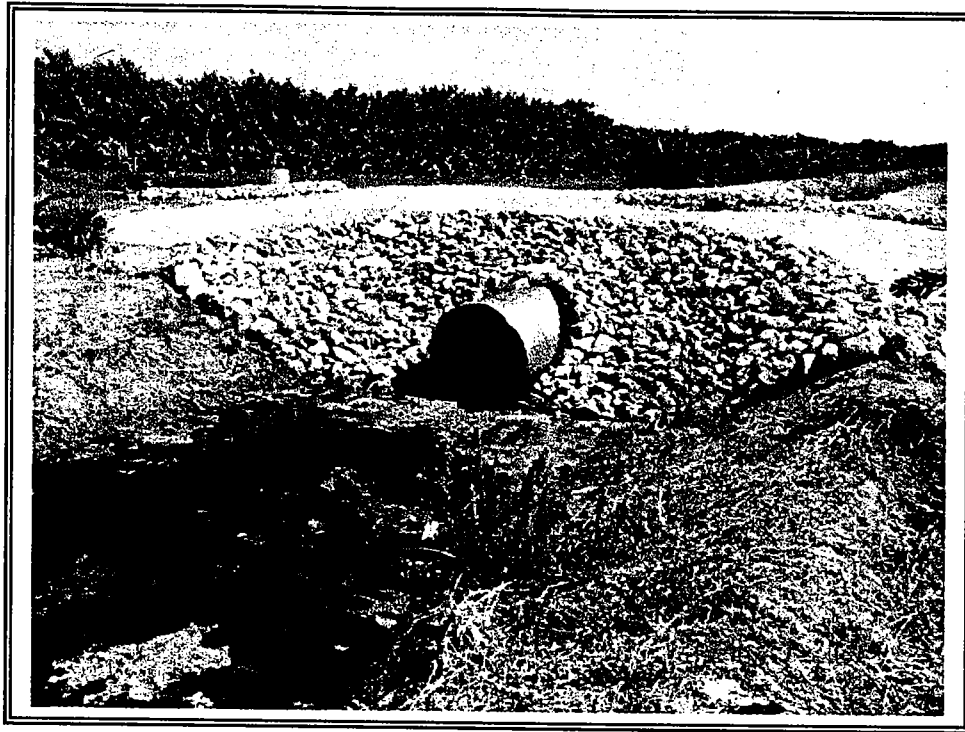


Photo No. 11: Photograph of corrugated metal pipe and armor wall supporting the internal farm road.

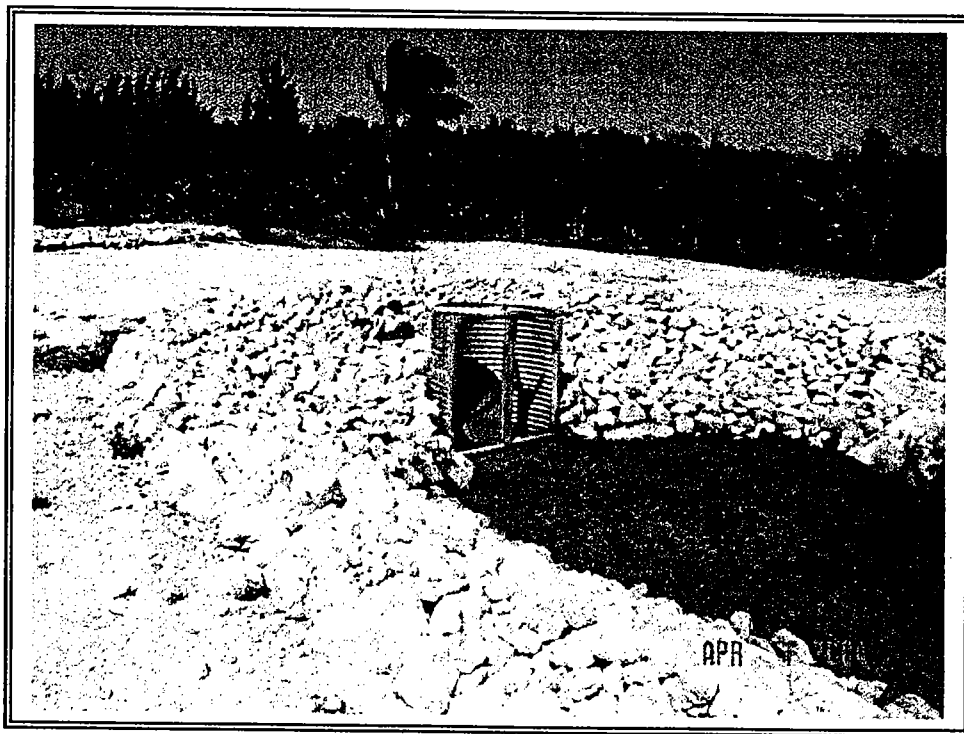


Photo No. 12: Photograph of internal road crossing and drainage control structure.

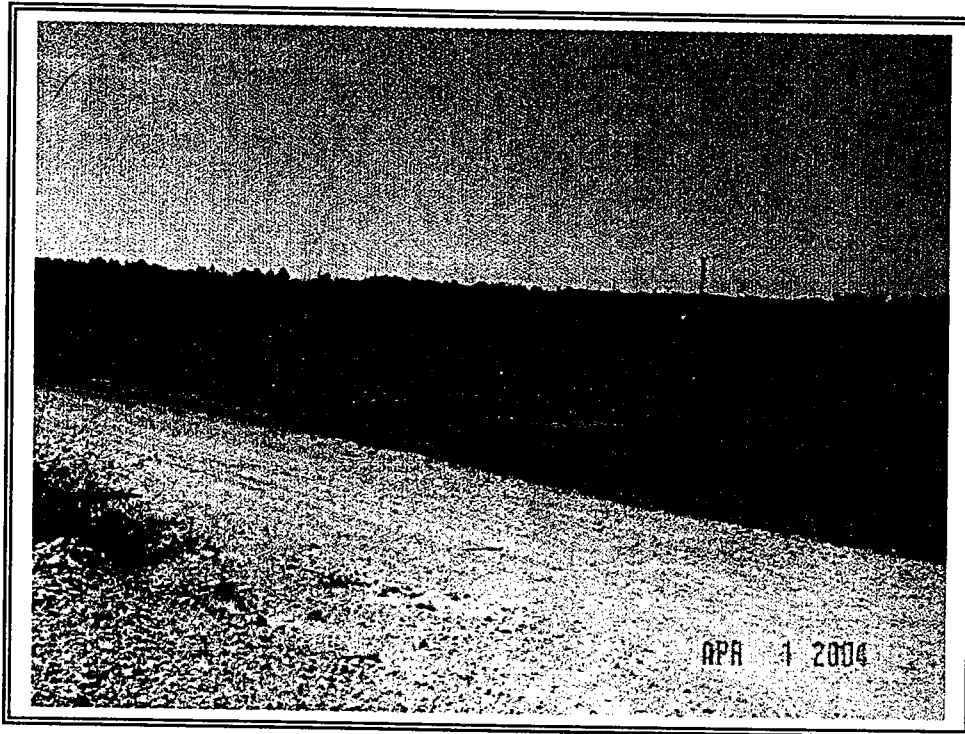


Photo No. 13: Photograph of internal farm road and recently planted palm grove.



Photo No. 14: Photograph of reservoir area.



Photo No. 15: Photograph of reservoir area.

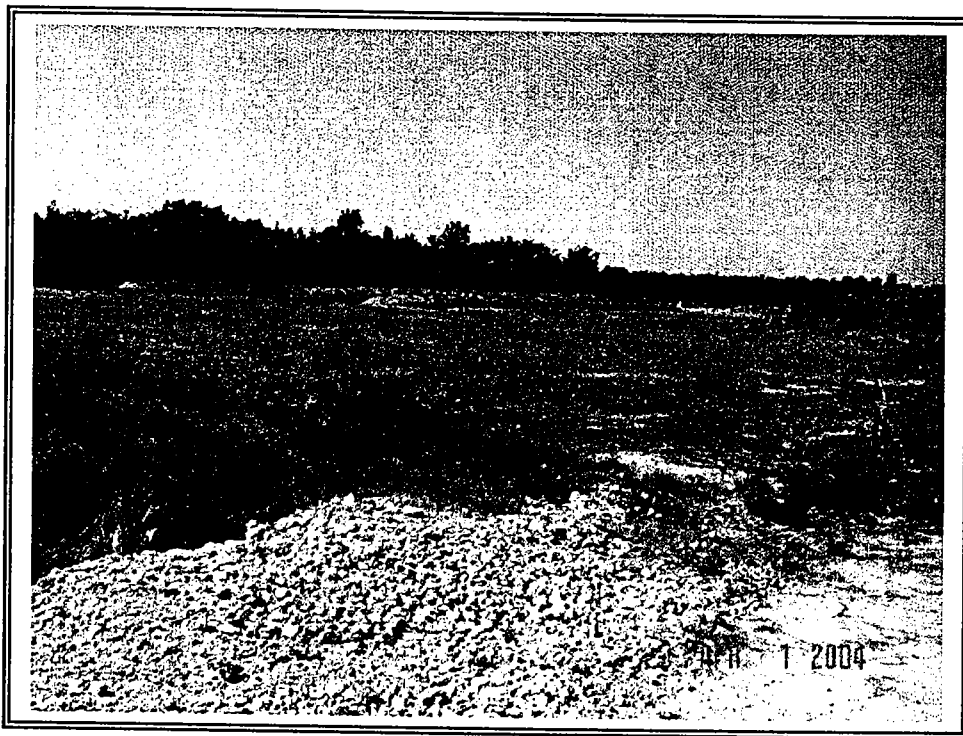


Photo No. 16: Photograph of cleared farm field area.