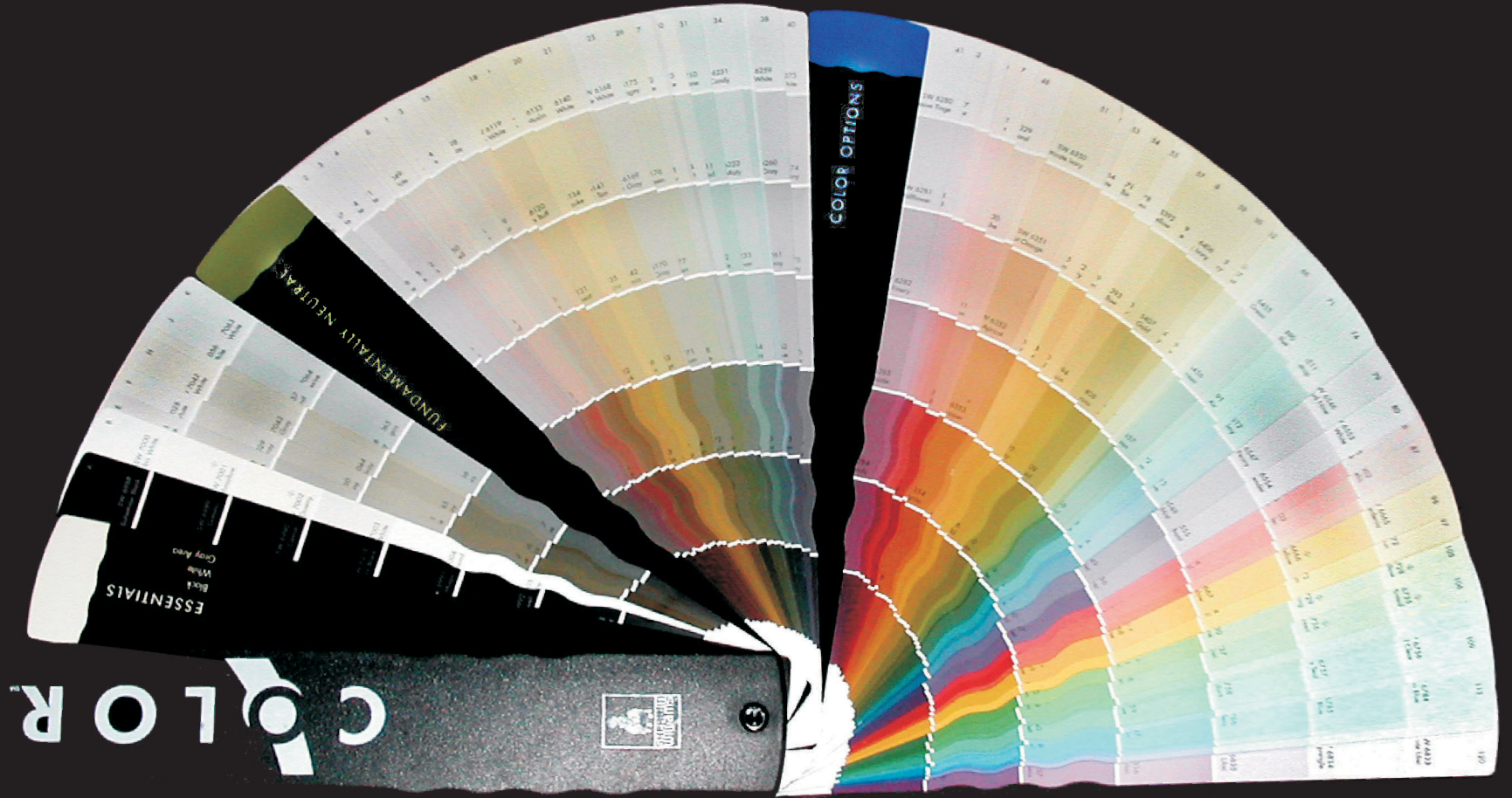


How to Use the Downtown Cape Coral Approved Paint Color Palette



The Sherwin-Williams COLOR (2002) Fan deck



When "Light Hues Only" are required, colors may be chosen from the lightest four hues on each color strip.

Landowners may choose up to four colors for a single building (one or two body colors, one or two trim colors, and one accent color; these may be the same or different). Architectural elements on the building facade, such as canopies, balconies, and arcades, shall be in the same color as one of the four chosen building colors, except where constructed with a permitted material such as stone or brick that is left unpainted. Sherwin-Williams standard paint colors are used in the Color Palette for reference, but any manufacturer's paint is acceptable if substantially the same in color.

Body colors are used on building walls, freestanding walls, and other primary building elements, and shall be used for no less than 70% of the painted surface area of any one floor of the building. Recommended but not required: use of two shades of body color – one above and one below the expression line between the first and second floors. Approved body colors are those in the following Sherwin-Williams collections:

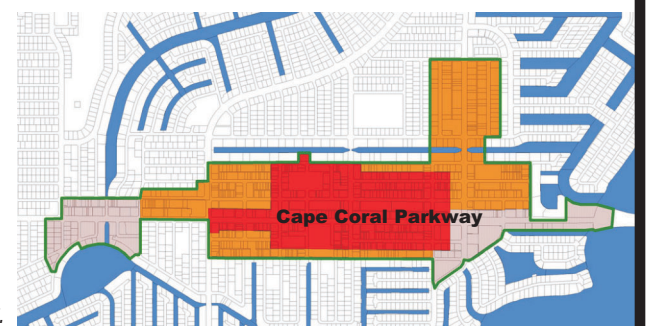
- “Essentials,”
- “Fundamentally Neutral” (light hues only), and
- “Color Options” (light hues only).

Trim colors are used on doors, door frames, windows, window frames, storefront frames, handrails, shutters, ornament, fences, and similar features. Trim colors shall be used for no more than 30% percent of the painted surface area of the building. Recommended but not required: trim colors usually appear best in a lighter shade than the body color. Approved trim colors are those in the following Sherwin-Williams collections:

- “Essentials,”
- “Fundamentally Neutral” (light hues only), and
- “Color Options” (light hues only).

Accent colors are used to highlight special features such as doors, shutters, gates, ornament, storefront elements, and awnings. The accent color shall be used for no more than 25% of the painted surface of the building. Approved accent colors are those in the following Sherwin-Williams collections:

- “Essentials,”
- “Fundamentally Neutral,” and
- “Color Options.”



Color palette is to be used in the Downtown Cape Coral districts only.